



武书连世界大学胜者排名  
WuShulian World University Winner Ranking

2023 Winner Ranking No.316 A

Tsinghua University  
Winner Ranking Basic Analysis Report (2023)



## Preface

World University Winners Ranking is the first university ranking developed by Wushulian that leading the world's scientific development. The Ranking evaluates the world's universities based on the principle that when two universities are evaluated against each other in terms of citations of research papers, the winner is the one whose papers were cited more by another one. The Ranking reveals the academic dependency between thousands of universities around the world and the leading role of the top-ranked universities in scientific development.

The winner ranking uses rank plus grade to show the position of each university among 4000 universities in the world, and each grade is defined as follows:

Grade	Level	Rank	Percent of Level	Percent of Grade
A	A++	Top 2%	2%	10%
	A+	2%~5%	3%	
	A	5%~10%	5%	
B	B+	10%~20%	10%	20%
	B	20%~30%	10%	
C	C+	30%~40%	10%	20%
	C	40%~50%	10%	
D	D+	50%~60%	10%	20%
	D	60%~70%	10%	
E	E+	70%~80%	10%	30%
	E	80%~90%	10%	
	E-	Last 10%	10%	

## Content

---

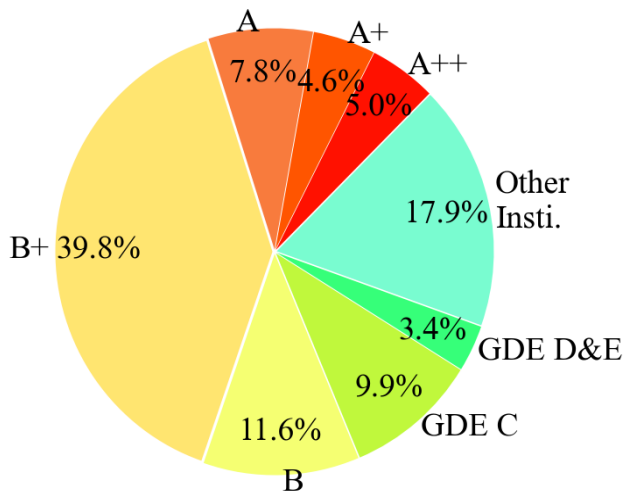
■ Winner Ranking Information	1
■ Comparison with Mutual Citation Levels from Universities at Various Ranks	1
■ Distribution of Win-Loss Ratio against Each Types of Universities	3
■ Against Universities at Various Ranks . . . . .	3
■ Against Universities on Various Continents . . . . .	3
■ Against Universities of G7 and the BRICS . . . . .	4
■ Against Universities of G20 (Other Countries) . . . . .	4
■ Against 100 Nearby Universities	5
■ Contact Us	10

## I. Winner Ranking Information

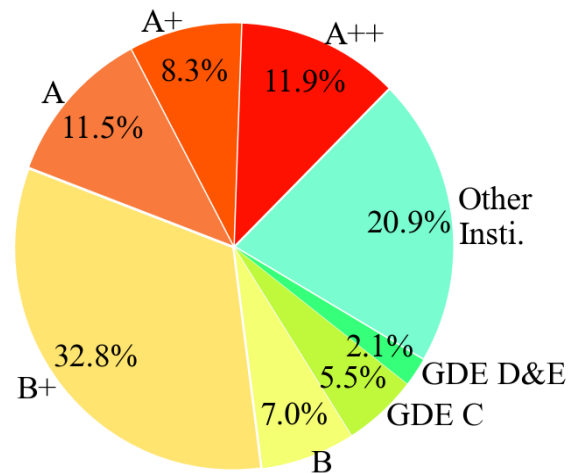
Tsinghua University	<b>World Ranking 316 A</b>	AS 21 A++
	CHN 1 A++	Citation Ranking 2
	Beijing	Initial Ranking 7

## II. Comparison with Mutual Citation Levels from Universities at Various Ranks

Citation institutions' hierarchy of  
 Tsinghua University  
 Cited Num.:234445.9



Hierarchy of institutions cited by  
 Tsinghua University  
 Citing Num.:171485.4



Cited Number	Citing Number	Citing Surplus	Citing Surplus Rate(%)
234445.91	171485.37	62960.54	26.86
Cited by A++	Citing A++	A++ Citing Surplus	A++ Citing Surplus Rate(%)
11746.31	20472.27	-8725.96	-74.29
Cited by A+	Citing A+	A+ Citing Surplus	A+ Citing Surplus Rate(%)
10885.5	14254.68	-3369.18	-30.95
Cited by A	Citing A	A Citing Surplus	A Citing Surplus Rate(%)
18194.99	19701.05	-1506.06	-8.28

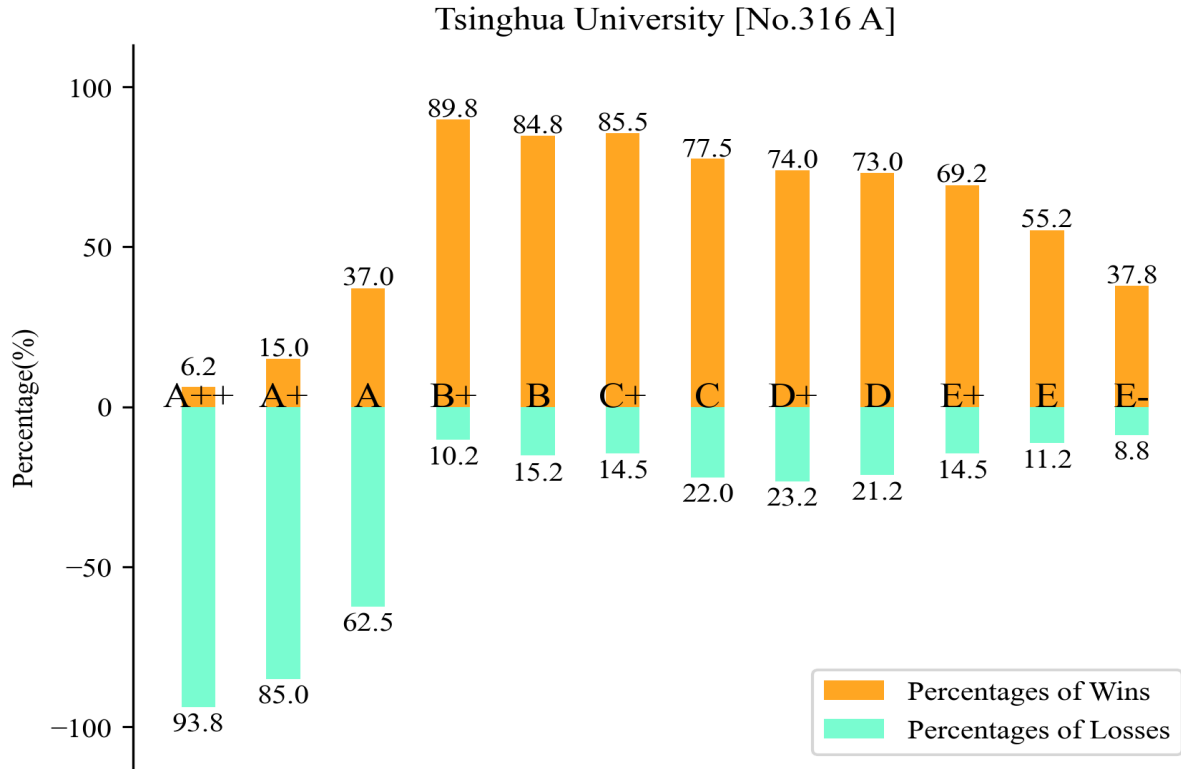


Cited by B+	Citing B+	B+ Citing Surplus	B+ Citing Surplus Rate(%)
93260.92	56266.82	36994.1	39.67
Cited by B	Citing B	B Citing Surplus	B Citing Surplus Rate(%)
27234.84	11922.9	15311.95	56.22
Cited by C+	Citing C+	C+ Citing Surplus	C+ Citing Surplus Rate(%)
16217.87	6551.05	9666.82	59.61
Cited by C	Citing C	C Citing Surplus	C Citing Surplus Rate(%)
6897.33	2874.05	4023.28	58.33
Cited by D+	Citing D+	D+ Citing Surplus	D+ Citing Surplus Rate(%)
3037.92	1448.98	1588.94	52.3
Cited by D	Citing D	D Citing Surplus	D Citing Surplus Rate(%)
2133.28	904.94	1228.34	57.58
Cited by E+	Citing E+	E+ Citing Surplus	E+ Citing Surplus Rate(%)
1411.48	578.57	832.9	59.01
Cited by E	Citing E	E Citing Surplus	E Citing Surplus Rate(%)
877.24	363.4	513.84	58.57
Cited by E-	Citing E-	E- Citing Surplus	E- Citing Surplus Rate(%)
502.83	245.42	257.41	51.19
Cited by Oth. Insti.	Citing Oth. Insti.	Oth. Insti. Citing Surplus	Oth. Insti. Citing Surplus Rate(%)
42045.41	35901.23	6144.17	14.61

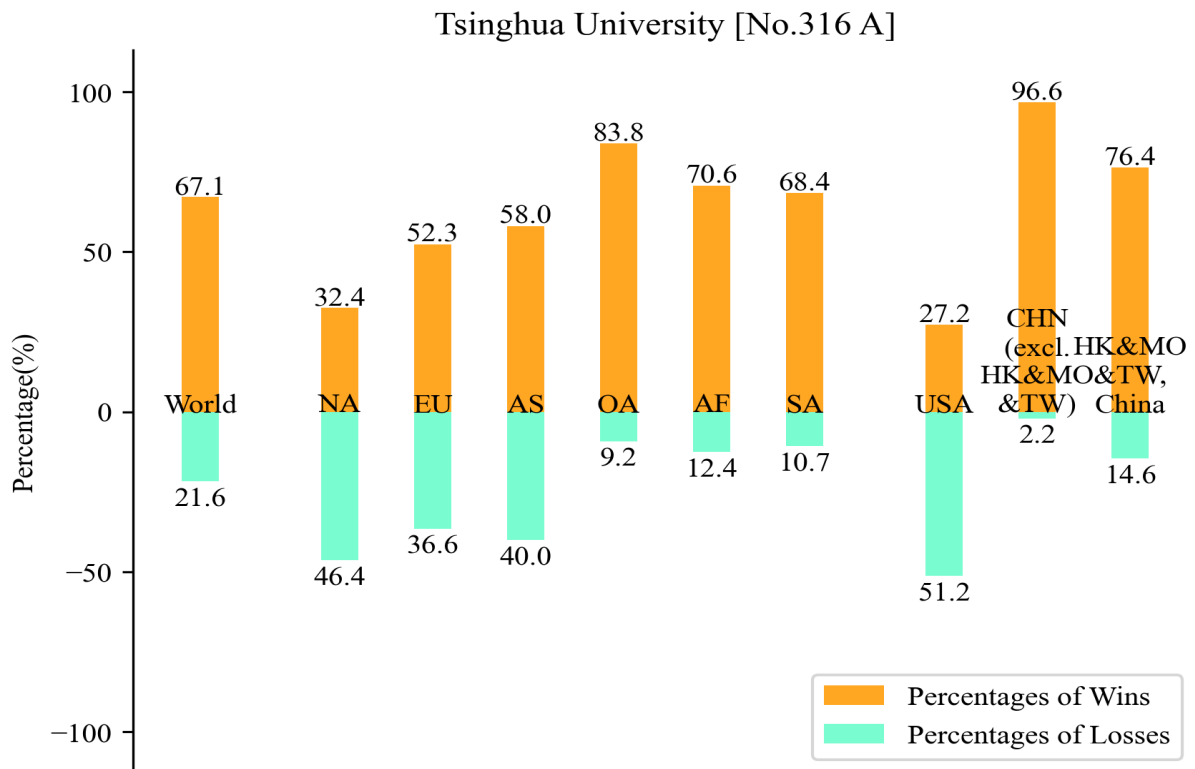
### III. Distribution of Win-Loss Ratio against Each Types of Universities

(The portion of the win-loss ratio that adds up to less than 100 points to universities with zero or equal mutual citations)

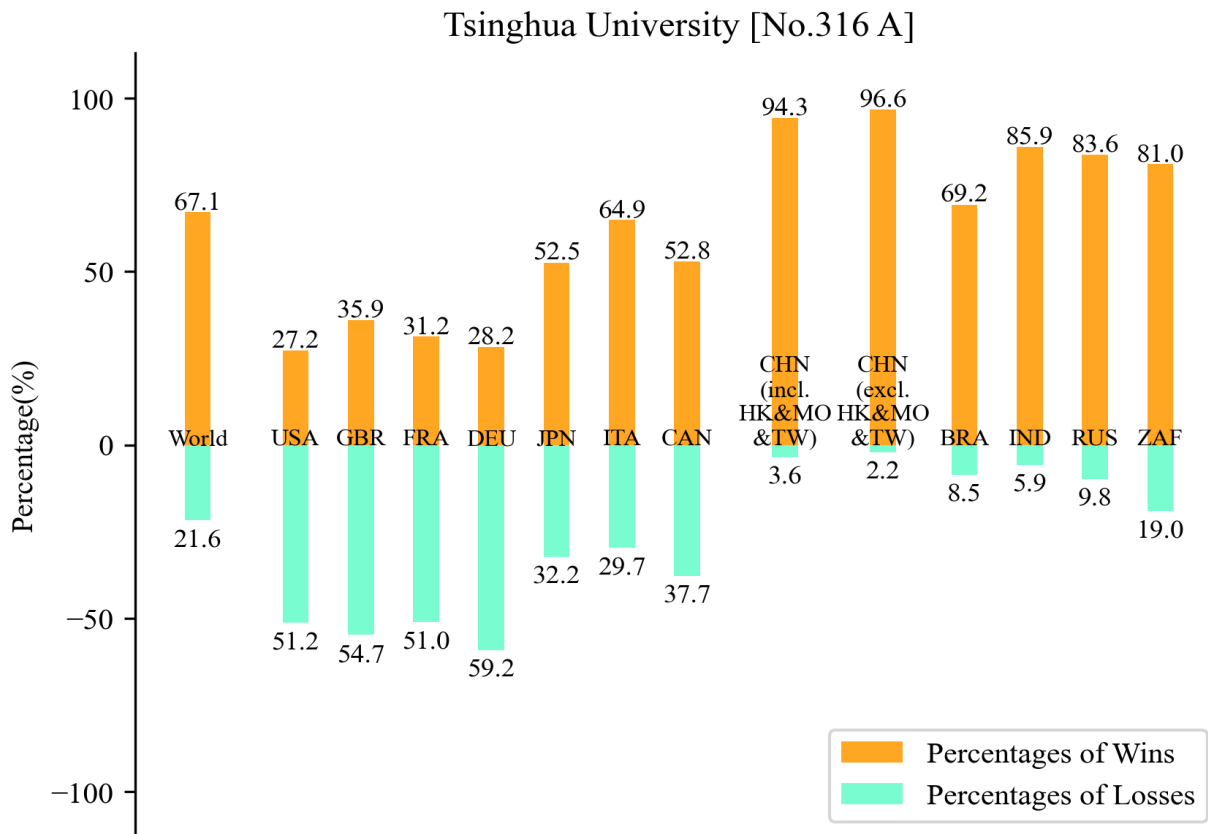
#### ■Against Universities at Various Ranks



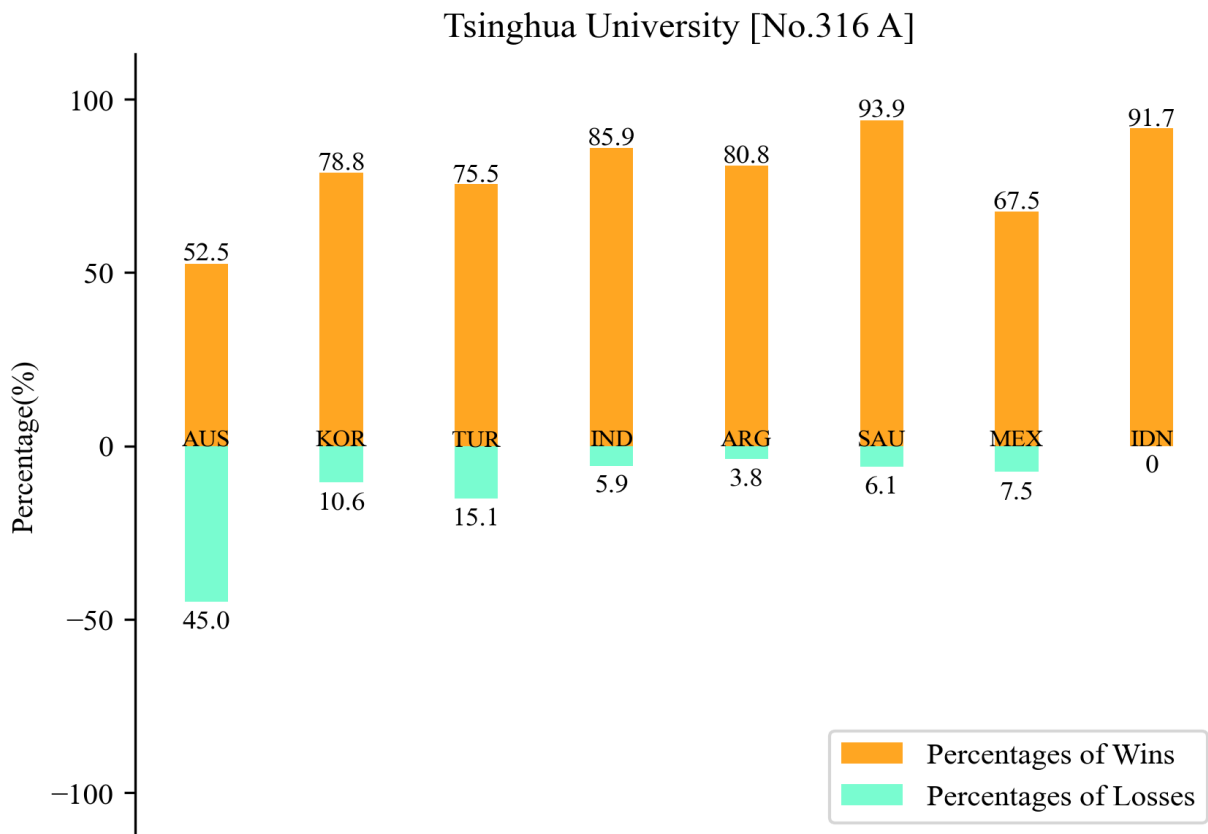
#### ■Against Universities on Various Continents



■ Against Universities of G7 and the BRICS



■ Against Universities of G20 (Other Countries)





#### IV. Against 100 Nearby Universities

Duel Result	School Name	Winner Ranking	Country\Region & Ranking	Continent & Ranking
Loss	Catholic University of Louvain	266	BEL 2	EU 112
Loss	Missouri University of Science and Technology	267	USA 121	NA 133
Win	University of Surrey	268	GBR 39	EU 113
Loss	University of Arkansas, Fayetteville	269	USA 122	NA 134
Loss	University of Kent	270	GBR 40	EU 114
Loss	Claude Bernard University Lyon 1	271	FRA 8	EU 115
Loss	The University of Western Australia	272	AUS 9	OA 10
Loss	Ruhr University Bochum	273	DEU 22	EU 116
Loss	University of Houston	274	USA 123	NA 135
Win	South Dakota State University	275	USA 124	NA 136
Loss	University of Idaho	276	USA 125	NA 137
Win	University of Sherbrooke	277	CAN 13	NA 138
Loss	University of South Australia	278	AUS 10	OA 11
Loss	University of New Hampshire	279	USA 126	NA 139
Win	Victoria University of Wellington	280	NZL 2	OA 12
Loss	San Diego State University	281	USA 127	NA 140
Loss	Ulsan National Institute of Science and Technology	282	KOR 2	AS 14
Loss	University of Manitoba	283	CAN 14	NA 141
Loss	Norwegian University of Science and Technology	284	NOR 4	EU 117
Loss	University of Bordeaux	285	FRA 9	EU 118
Win	University of Louisville	286	USA 128	NA 142



Win	Nagoya University	287	JPN 6	AS 15
Win	University of Helsinki	288	FIN 2	EU 119
Win	University of Strasbourg	289	FRA 10	EU 120
Loss	Loughborough University	290	GBR 41	EU 121
Win	Pohang University of Science and Technology	291	KOR 3	AS 16
Win	Seoul National University	292	KOR 4	AS 17
Loss	Philipps University of Marburg	293	DEU 23	EU 122
Loss	Universite Libre de Bruxelles	294	BEL 3	EU 123
Win	Ewha Womans University	295	KOR 5	AS 18
Loss	Kent State University	296	USA 129	NA 143
Win	University of Victoria	297	CAN 15	NA 144
Loss	The University of Tennessee-Knoxville	298	USA 130	NA 145
Win	Kansas State University	299	USA 131	NA 146
Loss	Aix Marseille University	300	FRA 11	EU 124
Win	Keio University	301	JPN 7	AS 19
Loss	Ghent University	302	BEL 4	EU 125
Loss	Universite Laval	303	CAN 16	NA 147
Win	The University of Alabama	304	USA 132	NA 148
Loss	Saarland University	305	DEU 24	EU 126
Loss	University of Toledo	306	USA 133	NA 149
Win	University of Wyoming	307	USA 134	NA 150
Loss	Florida International University	308	USA 135	NA 151
Loss	Macquarie University	309	AUS 11	OA 13
Loss	University of Konstanz	310	DEU 25	EU 127
Win	University of Cologne	311	DEU 26	EU 128
Loss	University of Liege	312	BEL 5	EU 129



Loss	Tohoku University	313	JPN 8	AS 20
Loss	University of Tasmania	314	AUS 12	OA 14
Loss	University of Antwerp	315	BEL 6	EU 130
Draw	<b>Tsinghua University</b>	<b>316</b>	<b>CHN 1</b>	<b>AS 21</b>
Win	University of Fribourg	317	CHE 8	EU 131
Win	West Virginia University	318	USA 136	NA 152
Loss	University of Strathclyde	319	GBR 42	EU 132
Win	George Mason University	320	USA 137	NA 153
Win	Victoria University	321	AUS 13	OA 15
Loss	University of North Carolina at Charlotte	322	USA 138	NA 154
Win	National Technical University of Athens	323	GRC 1	EU 133
Loss	University College Cork	324	IRL 2	EU 134
Win	University of Wollongong	325	AUS 14	OA 16
Win	University of Barcelona	326	ESP 2	EU 135
Win	Griffith University	327	AUS 15	OA 17
Loss	The Chinese University of Hong Kong	328	HKG 3	AS 22
Win	University of Limerick	329	IRL 3	EU 136
Win	Southern Illinois University, Carbondale	330	USA 139	NA 155
Win	University of Kiel	331	DEU 27	EU 137
Loss	Florida Atlantic University	332	USA 140	NA 156
Win	Wayne State University	333	USA 141	NA 157
Loss	Humboldt University of Berlin	334	DEU 28	EU 138
Win	Virginia Commonwealth University	335	USA 142	NA 158
Win	Vrije Universiteit Brussel	336	BEL 7	EU 139
Loss	The University of Newcastle	337	AUS 16	OA 18



Loss	Technical University of Dortmund	338	DEU 29	EU 140
Win	Sungkyunkwan University	339	KOR 6	AS 23
Win	Technical University of Dresden	340	DEU 30	EU 141
Loss	Friedrich Schiller University Jena	341	DEU 31	EU 142
Loss	University of Graz	342	AUT 4	EU 143
Loss	Polytechnic University of Milan	343	ITA 1	EU 144
Loss	University of Cote d'Azur	344	FRA 12	EU 145
Loss	Clemson University	345	USA 143	NA 159
Win	Brunel University London	346	GBR 43	EU 146
Loss	Curtin University	347	AUS 17	OA 19
Win	University of North Texas	348	USA 144	NA 160
Win	Kanazawa University	349	JPN 9	AS 24
Loss	University of Essex	350	GBR 44	EU 147
Loss	Technical University of Darmstadt	351	DEU 32	EU 148
Loss	University of Bremen	352	DEU 33	EU 149
Loss	Queensland University of Technology	353	AUS 18	OA 20
Win	University of Cape Town	354	ZAF 1	AF 1
Win	University of Saskatchewan	355	CAN 17	NA 161
Win	University of Jyvaskyla	356	FIN 3	EU 150
Loss	Western Sydney University	357	AUS 19	OA 21
Win	La Trobe University	358	AUS 20	OA 22
Win	University of Canterbury	359	NZL 3	OA 23
Loss	Technical University of Braunschweig	360	DEU 34	EU 151



Loss	Baylor University	361	USA 145	NA 162
Win	University of Turku	362	FIN 4	EU 152
Loss	Hokkaido University	363	JPN 10	AS 25
Loss	Polytechnic University of Catalonia	364	ESP 3	EU 153
Loss	University of Navarra	365	ESP 4	EU 154
Loss	Mississippi State University	366	USA 146	NA 163



## V. Contact Us

Data analysis consulting services help your organization achieve a variety of goals, including:

- (i) Comparison with any university in the world
- (ii) Comparison with any group of universities in the world.
- (iii) How to improve your citation margin and thus your winner rank.
- (iv) How to become a higher ranked university.

Algorithm and source data services provide various resources for your research, including:

- (i) Disclosure of the winner ranking algorithm for the convenience of interested organizations or individuals to verify through repetition.
- (ii) The original times of mutual citation between schools in academic papers.
- (iii) Discussion of academic research based on the "Winner First" principle.

Please visit official website for Wushulian Universities Ranking([www.wurank.net](http://www.wurank.net)).